

## Neural changes after Emotional Freedom Techniques treatment for chronic pain sufferers

Stapleton Peta<sup>a,\*</sup>, Baumann Oliver<sup>a</sup>, O'Keefe Tom<sup>a</sup>, S. Bhuta<sup>b</sup>

<sup>a</sup> School of Psychology, Bond University, Gold Coast, Queensland, 4229, Australia

<sup>b</sup> Griffith University, School of Medicine & Menzies Health Institute, Dept. of Medical Imaging, Gold Coast University Hospital, Gold Coast, Queensland, Australia, 4215

### ARTICLE INFO

#### Keywords:

Chronic pain

Stress

Emotional freedom techniques

Resting-state fMRI

### ABSTRACT

This clinical trial investigated the effect of an Emotional Freedom Techniques (EFT) intervention on brain activation in chronic pain sufferers using functional magnetic resonance imaging (fMRI). EFT is a brief stress reduction technique which combines stating a cognitive statement with somatic tapping on acupressure points. Twenty-four adults were allocated to a six-week online group EFT treatment and underwent resting-state fMRI pre and post the intervention. A repeated measures MANOVA indicated significant differences in the levels of pain severity (−21%), pain interference (−26%), quality of life (+7%), somatic symptoms (−28%), depression (−13.5%), anxiety (−37.1%), happiness (+17%), and satisfaction with life (+8.8%) from pre-to post-test. Cohen's effect sizes ranged from small (0.2) to large (0.75) values suggesting significance for the intervention. fMRI analysis showed post-EFT treatment significantly decreased connectivity between the medial prefrontal cortex (a pain modulating area) and bilateral grey matter areas in the posterior cingulate cortex and thalamus, both areas being related to modulating and catastrophizing of pain. There were no brain areas that showed significantly increased connectivity post-EFT treatment. Coupled with the psychological measures the findings support the effects of the EFT intervention in reducing chronic pain and its impacts. Recommendations for future research are discussed.

### 1. Introduction

Chronic pain (CP) affects one-third to 50% of the population [1] with a higher prevalence among females and affecting 62% of adults 75 years and older [2,3]. CP is a major health care crisis due to its high prevalence and associated physical and emotional incapacity [4]. Current treatment options for CP, which include physical therapy and pharmaceutical approaches, including opioids, are now recognized as inadequate [5–7]. Similarly, cognitive behavioral therapies (CBT) show only moderate-effect sizes of benefit over waiting lists and small or no effects comparators for outcomes in pain, disability, and mood [8]. Although there have been over 100 randomized clinical trials, there is still only low-quality evidence of small to moderate effects of CBT for CP. In the context of this treatment dilemma, body-based somatic approaches have emerged as potential treatments for CP. These approaches share several common features: direct interventions at the body level; potential ability to change brain activity very rapidly, and presumed capacity to shift outdated emotional learning [9]. We propose a radical re-imagining of therapy for CP is needed - to approaches with a strong somatic

component in their actual treatment delivery (i.e., in contrast to emphasis on cognition), to capitalize on the well-established relationships between mind and body.

In this regard, an innovative answer may be in altering pain through a consideration of embodied perception—meaning an embodied pain approach. Emotional Freedom Techniques (EFT) is one such body-based approach, an evidence-based brief intervention for anxiety, depression, phobias and posttraumatic stress disorder (PTSD). EFT combines elements of cognitive and exposure therapy with physical stimulation of acupressure points, and is a manualized evidence-based stress reduction technique. It has been validated in more than 100 clinical studies and meta-analyses of EFT for anxiety (Clond, 2016), depression (Nelms & Castel, 2016), and PTSD [10] indicate treatment effects that exceed those of psychopharmacology and conventional psychotherapy (Cohen's *d* or Hedge's *g* above 0.8). The impact of EFT on physical symptoms has been examined in diverse samples, including veterans [11], hospital patients with tension headaches [12], cancer patients [13], chronic pain [14], fibromyalgia [15], healthcare workers [16], frozen shoulder [17], psoriasis [18], seizure disorders [19], and

\* Corresponding author.

E-mail address: [pstaplet@bond.edu.au](mailto:pstaplet@bond.edu.au) (S. Peta).

<https://doi.org/10.1016/j.ctcp.2022.101653>

Received 10 June 2022; Received in revised form 13 July 2022; Accepted 24 July 2022

Available online 31 July 2022

1744-3881/© 2022 Elsevier Ltd. All rights reserved.

traumatic brain injury [20]. The delivery of EFT has also been examined across a range of options outside of in person trials, including online for weight loss [21], relationship skills training [22], food cravings [23,24], fibromyalgia [15] and via an app for stress and anxiety [25]. All studies indicate effectiveness and longevity for the intervention delivered as such.

Six comparative studies and a meta-analysis have addressed whether acupoint tapping is an essential ingredient for the favorable outcomes reported following EFT treatments, or whether the cognitive, exposure, and non-specific therapeutic elements of the protocol are the primary active ingredients [21]. Otherwise identical protocols with and without the acupoint tapping component were compared, and those which included tapping produced a larger effect size than those with the other components but without tapping. Finally, clinically favorable shifts after acupoint tapping sessions have also been reported for a number of biomarkers [26,27] and include reductions in cortisol production, normalization of brain-wave patterns, shifts in blood flow within the brain, and changes in gene expression [21,23,28].

Research on the efficacy of EFT directly for CP is in its infancy, however intervention trials to date indicate significant reductions in a range of psychological and physical conditions. A trial offered as a 3-day workshop for CP sufferers resulted in significant reductions for Pain Catastrophizing Scale items (rumination, magnification, and helplessness) as well as significant improvements in pain severity, interference, life control, affective distress, and dysfunctional composite [29]. A brief 4-h intensive EFT program for CP [30] revealed a significant decrease in the severity ( $-12.04\%$ ,  $p = 0.044$ ) and impact ( $-17.62\%$ ,  $p = 0.008$ ) of participants' pain from pretest to posttest, and a significant improvement in their overall psychological distress from pretest to posttest ( $-36.67\%$ ,  $p < 0.001$ ). There was also a significant improvement in participants' depression ( $-29.86\%$ ,  $p = 0.007$ ), anxiety ( $-41.69\%$ ,  $p < 0.001$ ), and stress ( $-38.48\%$ ,  $p = 0.001$ ) from pretest to posttest. The main effect was still present after 6-month follow-up. Similarly, significant reductions in pain catastrophizing thoughts (rumination, magnification and helplessness), anxiety, and depression in a sample of women diagnosed with fibromyalgia, have been found following EFT treatment delivered online [15].

Outside of this direct targeting of EFT for chronic pain, at least 20 other EFT trials have measured the impact of the intervention on pain as a variable. This has included for PTSD symptom remediation in veterans [20], in relationship to anxiety, depression and food cravings in healthcare workers [16], dysmenorrhea pain in adolescents [31], post operation pain related to caesarian section [32]. The majority report significant statistically improvement in pain even when not being directly targeted.

Though the mechanisms supporting EFT's benefits have not been fully elucidated, it is proposed the manual stimulation of acupuncture points sends, to specific brain areas, activating and deactivating signals that are beneficial in relation to the psychological issues being addressed [9]. Harvard Medical School initially investigated the effects of stimulating acupuncture points via fMRI and other imaging across a 10-year study and indicated the amygdala and other areas of the limbic system were reduced in arousal, almost immediately after stimulation [33]. To date only one fMRI study exists for EFT that showed after a 4-week (8-h) intervention for food cravings and emotional eating in obese adults, blood flow to brain regions involved with craving (the superior temporal gyrus, associated with cognition, and the lateral orbito-frontal cortex, associated with reward) significantly reduced when images of desired foods were presented [24]. Finally, there is also speculation tapping on acupoints also generates signals known as "mechanosensory transduction" [34]. Piezoelectricity occurs after pressure on a class of large proteins in skin cells converts mechanical stimulation into electrical impulses [35]. The signals are believed to carry to other areas of the body via connective tissue. Current research [36] has shown tracer dyes, injected at acupuncture points, generated linear migrations at these points, pointing to an anatomical basis for the acupoints.

Specifically, EFT combines elements of two other evidence-based psychotherapeutic techniques, exposure therapy and cognitive therapy, with acupoint stimulation in the form of pressure or tapping with the fingertips. It is principally a body-centric approach. As might be expected from a therapy that includes a strong somatic component, physiological shifts appear to follow EFT treatments. Our aim in the present trial was to assess EFT's effects on pain-related brain circuitry underlying CP and evaluate the treatment related changes. Our primary hypothesis centred on CP being a multidimensional experience comprised of sensory, affective, and cognitive components, therefore EFT would reduce psychological symptoms related to CP, as well as functional connectivity in catastrophizing regions of the brain.

## 2. Method

### 2.1. Participants and procedure

Participants ( $N = 24$ ) were called for through community advertising, and were over 18 years, not suffering any severe psychological impairment, not currently receiving treatment (psychological or medical) for their chronic pain and all genders were eligible. Ethical approval was provided by the Bond University Human Research Ethics Committee. Inclusion criteria included: being English-speaking; having an endorsement of chronic pain for at least 6 months out of the past 12 months that negatively impacted overall functioning and quality of life; having chronic pain without clear organic etiology determined by primary care physician or subspecialist; and having a current pain rating of 4 or higher on 0 to 10 visual analog pain index. Exclusion criteria included: not currently being engaged in another psychotherapy treatment intervention for chronic pain (e.g. cognitive behavioral therapy); having a major psychiatric disorder (e.g. bipolar disorder) concomitant to symptoms of chronic pain and deemed likely to interfere with treatment delivery of EFT; not currently in high-intensity substance use disorder treatment program; not in current or planned cancer treatment with radiation and/or chemotherapy; having no malignant pain caused by cancer pain syndrome; having no referred pain such as back pain caused by pancreatitis; having no co-morbid autoimmune disorders, including rheumatoid arthritis and systemic lupus erythematosus; and no planned major surgical procedure within the proceeding 90 days. Because of the fMRI aspect of the study, participants could not have any metal implants (e.g., pacemaker) and completed a MRI head safety questionnaire prior to the scan.

All participants completed a pre-survey battery of measures via an electronic link (PsychData) and attended a brain scan (fMRI) at a local hospital radiology facility twice (pre-and post EFT intervention). Most of the sample was female ( $N = 19$ , 79%) and the ages of the participants ranged between 18 and 77 ( $M = 50.0$ ,  $SD = 14.95$ ). The most common level of education was a Bachelor's degree (41.7%), and the modal household income was between \$70,000 to \$90,000. Consent was received from all participants before the collection of data. A further breakdown of the demographics is provided in Table 1.

### 2.2. Psychological measures

**Demographic Questions.** Participants were asked to provide information regarding age, gender, marital status, number of people in their household, country of birth, income, and highest level of completed education.

**The Brief Pain Inventory Short Form (BPI; Cleeland, 1991).** The BPI is a widely used measure of pain and has been shown to be an appropriate measure for a wide range of clinical conditions. The BPI assesses pain at its "worst," "least," "average," and "now" (current) state. It also measures how much pain has interfered with seven daily activities, including general activity, walking, work, mood, enjoyment of life, relations with others, and sleep pain. Reliability has been established with cancer patients (Daut et al., 1983), outpatients (Radbruch et al.,

**Table 1**  
Frequencies of the demographic variables of participants (n = 24).

Variable	Category	n (%)
Marital Status	Divorced	12 (50.0)
	Living with another	1 (4.2)
	Married	2 (8.3)
	Separated	6 (25.0)
	Single	2 (8.3)
	Widowed	1 (4.2)
People 'in Household	One	6 (25.0)
	Two	7 (29.2)
	Three	4 (16.7)
	Four or more	7 (29.2)
Education	High School or Equivalent	3 (12.5)
	Vocational/Technical College	6 (25.0)
	Bachelor's Degree	10 (41.7)
	Master's Degree	1 (4.2)
	Doctoral Degree	0 (0)
	Other	4 (16.7)
Annual Income	\$10,000 or less	2 (8.3)
	\$10,001 - \$30,000	4 (16.7)
	\$30,001 - \$50,000	2 (8.3)
	\$50,001 - \$70,000	2 (8.3)
	\$70,001 - \$90,000	3 (12.5)
	\$90,001 - \$110,000	2 (8.3)
	\$110,001 or more	9 (37.5)
Profession	Homemaker	3 (12.5)
	Retired	3 (12.5)
	Student	3 (12.5)
	Unemployed	1 (4.2)
	Education – Primary/Secondary, University, or Adult	5 (20.8)
	Finance and Insurance	1 (4.2)
	Government	1 (4.2)
	Health Care	6 (25.0)
	Manufacturing	1 (4.2)

Note. n = Total no. of participants, % = Percentage of participants.

1999), osteoarthritis (Mendoza et al., 2006), and postsurgery pain (Mendoza et al., 2004).

**The Satisfaction with Life Scale [37].** The SWLS is a short 5-item instrument designed to measure global cognitive judgments of satisfaction with one's life. The coefficient alpha for the scale has ranged from 0.79 to 0.89, indicating that the scale has high internal consistency. The scale was also found to have good test-retest correlations (0.84, 0.80 over a month interval; Pavot & Diener, 1993). The scores range from five to 35 and higher scores indicated higher satisfaction.

**The Quality-of-Life Scale for Pain [38].** The QOL scale is a one item measure of function for people with pain, assessed on a 11-point likert scale (0 = non-functioning to 10 = normal quality of life). The QOL scale was developed by the American Chronic Pain Association to evaluate the impact pain has on basic activities of daily life.

**The Patient Health Questionnaire (PHQ, [39].** The PHQ is a self-administered scale that consists of five modules used to aid in the detection of DSM disorders. These modules can be used together or alone. The current study administered the depression, anxiety and somatoform modules of the PHQ. Somatic complaints, anxiety, and depressive symptoms are often co-occurring [the Somatic-Anxiety-Depressive (SAD) triad] and each has a significant relationship to chronic pain. The SAD modules have good internal reliability (.80-.92) and criterion validity, ranging from 0.71 to 0.94 [39].

**Happiness [40].** Happiness was assessed using an 11-item Likert-type scale (SUDS rating).

**The Adverse Childhood Experiences.** Adverse Childhood Experiences (ACEs) are potentially traumatic events that occur in childhood. ACEs can include violence, abuse, and growing up in a family with mental health or substance use problems. Toxic stress from ACEs can change brain development and affect how the body responds to stress, which is linked to chronic health problems and mental illness in

adulthood [41]. Because chronic pain and psychological distress are closely related, the ACE was included in the current study to examine the association between ACEs and chronic pain [42].

### 2.3. EFT treatment

The EFT treatment was offered for 2 h per week, for the 6-week period, and was delivered live online via a secure platform due to the inability to attend in person because of pandemic restrictions (<https://zoom.us/>). A trained EFT practitioner counsellor and a clinical psychologist delivered the live intervention, and all sessions were based on standardised protocols (See Craig & Fowlie, 1995). Acupressure points on the eyebrow, side of eye, under eye, under nose, chin, collarbone, under arm, and the top of the head were used (see Fig. 1). Full instructions and safeguards are described in Flint, Lammers, and Mitnick (2005).

The procedure of EFT begins by the individual stating a difficulty they are experiencing, followed by an opposing, but positive affirming statement. For example, an individual may state "Even though I have this intense pain in my right shoulder, I accept myself and this problem". Previous research has reported when positive and negative thoughts are combined (such as in Systematic Desensitization, a behaviour modification therapy), the individual experiences a decrease of the negative experience (Kazdin & Wilcoxon, 1976). The somatic component of EFT then involves tapping specific acupressure points while saying a shorter reminder phrase e.g., "this pain". The subject rates their level of the problem at the beginning (pain severity) out of 10 (0 = no pain, 10 = highest level of pain), and re-rates this every time they complete the

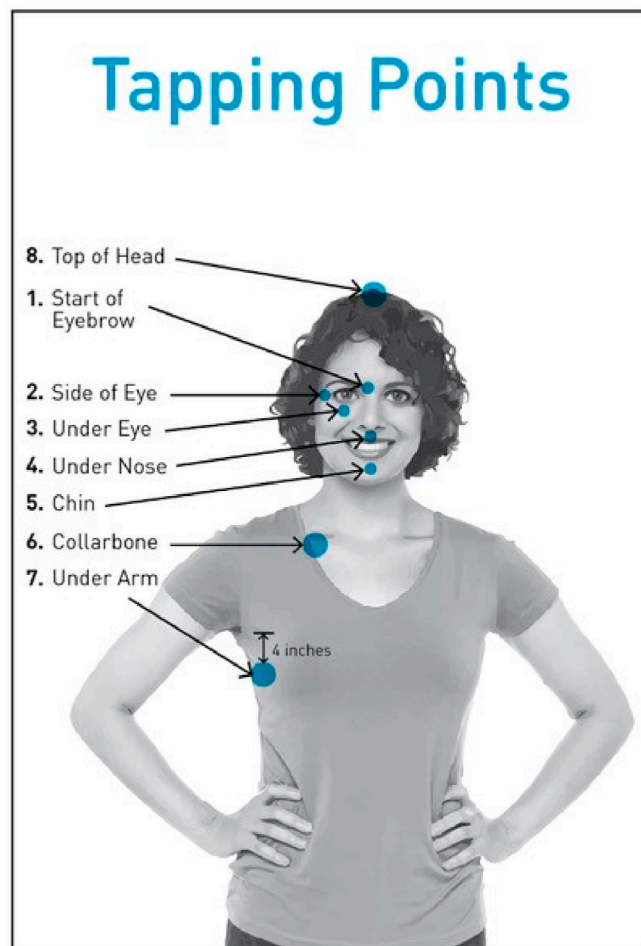


Fig. 1. EFT tapping points.

eight tapping points. The process is repeated until the discomfort score is zero. Participants were encouraged to self-administer EFT outside of treatment sessions in response to pain or stress. An overview of the EFT program is presented in Table 2.

#### 2.4. MRI acquisition

All images were acquired using a 3.0-Siemens Skyra scanner. A resting-state echo-planar imaging scan (36 axial slices;  $3 \times 3$  mm in-plane resolution; slice thickness, 3.0 mm (with 25% gap); 280 vol; TR/TE, 2210/30 ms) were acquired for each participant. Participants were instructed to rest with their eyes open. A high-resolution T1-weighted fast field echo structural scan (192 slices; 1.0-mm isovoxel resolution; TR/TE, 2400/2.26 ms) was also acquired. All participants had an initial (pre) brain scanning session and a second (post) scan 6-weeks later. All scans were completed between 8:00 a.m. and 11:00 a.m. after participants were presented with safety questions.

**Table 2**  
Overview of the EFT program.

Session	Topic	Operationalization	Time Spent
1	Psychoeducation about the EFT technique	Session discussed the nature of EFT, stress and doubt that EFT could be of assistance, and pain management; application of EFT to pain severity and intensity; Boxing Up technique for unfinished EFT	60 min psychoeducation 60 min in application of EFT
2	Chronic Pain and Feelings I; The Movie Technique	The EFT sessions used statements regarding common feelings related to their pain (e.g. "Even though I feel frustrated when I wake up in pain, I accept this") while doing the tapping process. Participants were taught how to use EFT if a past memory came to mind (e.g. related to the origin of their pain)	60 min psychoeducation 60 min in application of EFT
3	Chronic Pain and Feelings II; The Personal Peace Procedure	Session discussed anger and neurochemistry that occurs and relationship to chronic pain; beliefs about pain; application of EFT for anger; The Personal Peace Procedure was overview as a homework activity	30 min psychoeducation 90 min in application of EFT
4	Pain as Protection	Session discussed possible secondary gain issues in pain; application of EFT for the protective purpose of pain	30 min psychoeducation 90 min in application of EFT
5	Sleep and Energy	Session involved the application of EFT for insomnia due to pain, and daily activity/energy;	30 min psychoeducation 90 min in application of EFT
6	Goal Setting and Relapse Prevention	Session discussed living pain-free in the future and their associated identity; goal setting for the future; application of EFT to future goals and preventing relapse	60 min psychoeducation 60 min in application of EFT

#### 2.5. rsfMRI processing

rsfMRI preprocessing was completed using MATLAB R2015b (MathWorks Inc., Sherborn, USA), Statistical Parametric Mapping software (SPM12, Wellcome Trust Centre for Neuroimaging, University College London, UK), and functional connectivity toolbox version 17 (CONN). CONN is a MATLAB-based cross-platform application for the computation, display, and analysis of fMRI data. Images were motion corrected using rigid body linear transformation and unwarping. Motion parameters were extracted and used as subject-level regressors. Next the CONN algorithm for outlier detection was applied (i.e., ART-based identification of outlier scans). Subsequently normalization to Montreal Neurological Institute (MNI) space was performed based on the standard SPM MNI-152 T1 template. Finally, the functional data was smoothed using an  $8 \times 8 \times 8$  FWHM Gaussian kernel.

For the second level statistical analysis we conducted a *seed-to-voxel* functional connectivity analysis, using anatomical seed-regions of interest definitions of the FSL Harvard-Oxford Atlas as implemented by CONN. Guided by our prediction, we chose the Medial Prefrontal Cortex as our seed region for the analysis, i.e., we tested for changes in connectivity originating in this brain region. The pre vs post treatment comparison was the main regressor of interest. In addition, further nuisance covariates were entered, i.e., motion regressors (from the realignment procedure) and invalid images (from the ART procedure). The data was further band-pass filtered using the default values of 0.008–0.09 Hz and corrected for noise components from cerebral white matter and cerebrospinal areas using the CompCor denoising algorithms implanted as a default in CONN [43]. To detect changes due to EFT we performed a two-sided comparison of pre vs. post intervention resting state connectivity. The two-sided test was used to be able to detect both increases as well as decreases in brain connectivity. A voxel threshold of  $p < 0.01$  and a cluster-defining threshold  $p < 0.05$  (FEW corrected for multiple comparisons) was employed.

### 3. Results

Data was analysed through Statistical Package for Social Sciences Version 28 (SPSS; IBM, Armonk, NY, 2014). An alpha level of 0.05 was used for all statistical analyses unless otherwise stated. Initial analysis was conducted to explore the participants' accounts of their pain before the EFT treatment. The participants ranged in suffering CP from very high intensity to very low ( $M = 6.05$ ,  $SD = 2.72$ ), and there was a wide difference in total time suffered and the self-assessed severity (see Table 3). A mean ACE score of 2.38 ( $SD = 2.93$ ) was indicated among the participants.

#### 3.1. Psychological measures

A repeated measures MANOVA with two within-subjects factors (pre-test, post-test) was conducted to determine whether significant differences in the levels of pain severity, pain interference, quality of life, somatic symptoms, depression, anxiety, happiness, and satisfaction with life occurred between the pre-test and post-test measures (see Table 4 for descriptive statistics).

Sensitivity power analysis through G\*Power 3.1 indicated that the sample ( $N = 24$ ) was sufficient to detect an effect size of  $f^2 = 0.34$  with a

**Table 3**  
Pain levels in the sample ( $n = 24$ ).

Variable	<i>M</i>	<i>SD</i>	Min	Max
Years Of Pain	5.65	6.05	0.30	26.00
Pain Severity	5.45	2.25	1.25	9.25
Pain Interference	6.05	2.72	1.00	9.57
ACE	2.38	2.93	0.00	10.00

Note: *M* = mean, *SD* = standard deviation.

**Table 4**

Descriptive statistics for the dependent variables across pre-test (n = 24) and post-test (n = 24).

Variable	Pre-test			Post-test			Change in Mean	Cohen's d
	M	SD	Range	M	SD	Range		
Pain Severity	5.45	2.25	1.25–9.25	4.30	2.44	1–8.75	–1.15	0.49
Pain Interference	6.05	2.72	1–9.57	4.48	2.70	1–9	–1.57	0.58
Quality of Life	7.79	2.59	3–11	8.33	2.53	2–11	0.54	0.21
Somatic Symptoms	6.71	3.38	1–14	4.83	2.99	0–11	–1.88	0.59
Depression	8.33	4.98	0–16	7.21	4.91	0–21	–1.12	0.22
Anxiety	6.30	3.05	0–11	3.96	3.13	0–9	–2.34	0.75
Happiness	7.62	2.41	2–11	8.92	2.00	4–11	1.30	0.53
Life Satisfaction	15.92	6.71	6–30	17.33	7.06	5–30	1.41	0.20

Note: M = mean, SD = standard deviation, Range = minimum & maximum.

power of 0.8 and an alpha of .05. Prior to the MANOVA, the data was screened for assumptions of normality and multivariate outliers. Shapiro-Wilk tests were carried out on the DVs and found that the assumption of normality was violated in the pre-test and post-test pain interference, post-test happiness and post-test quality of life measures. Visual inspection of the univariate box plots revealed a single outlier among the post-test depression group; however, this was determined to be a genuine difference from the normal distribution, and the outlier was included in the analysis. Pillai's Trace was used due to the small size of the sample and the violation of normality.

The results of the repeated measures MANOVA indicated there was a significant difference in the combined dependent variables between pre-EFT and post-EFT ( $F(8, 14) = 3.366, p = 0.023, \text{partial } \eta^2 = 0.658$ ). Analysis of the dependent variables at a univariate level showed that for multiple comparisons ( $\alpha = 0.006$ ) pain severity ( $F(1, 21) = 8.731, p = 0.008, \text{partial } \eta^2 = 0.294$ ), pain interference levels ( $F(1, 21) = 13.337, p = 0.001, \text{partial } \eta^2 = 0.388$ ), somatic symptoms ( $F(1, 21) = 13.275, p = 0.002, \text{partial } \eta^2 = 0.387$ ), anxiety: ( $F(1, 21) = 5.538, p = 0.028, \text{partial } \eta^2 = 0.209$ ) and quality of life: ( $F(1, 21) = 5.502, p = 0.029, \text{partial } \eta^2 = 0.208$ ) were significantly different between pre-EFT and post-EFT.

The participants of the trial reported a significant decrease in pain severity from pre to post EFT ( $M = 5.45$  to  $M = 4.30$ ) of 21% and interference ( $M = 6.05$  to  $M = 4.48$ ) of 26%. Participants also achieved a significant decrease in depression ( $M = 8.33$  to  $M = 7.21$ ) of 13.5%, a decrease of 37.1% in anxiety ( $M = 6.3$  to  $M = 3.96$ ) and a decrease of 28% in somatic symptoms ( $M = 6.71$  to  $M = 4.83$ ). Increases in life satisfaction of 8.8% ( $M = 15.92$  to  $M = 17.33$ ), happiness ( $M = 7.62$  to  $M = 8.92$ , 17%) and quality of life ( $M = 7.79$  to  $M = 8.33$ , 7%) were also reported.

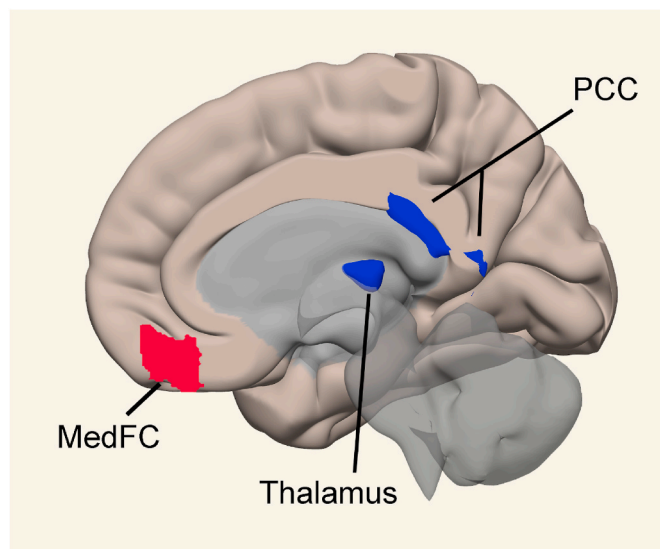
A correlation analysis was conducted to assess the relationship between ACE scores and the pain markers among the participants in the pre-test phase. Shapiro-Wilk tests were carried out on the dependent and ACE variables and found that the assumption of normality was violated for both ACE and pain interference, therefore Spearman's  $\rho$  was used for the analysis. No significant relationships were found between the ACE scores and any of the pain measures.

### 3.2. rsfMRI outcomes

In total, 19 participants attended the first fMRI scan, of these, 16 participants also completed the second scan session. As shown in Fig. 2, the rsfMRI showed post-EFT treatment significantly decreased connectivity between the medial prefrontal cortex and bilateral grey matter areas in the posterior cingulate cortex ( $-2, -58, 14$ ; 754 voxels,  $T = -5.8$ ) and thalamus ( $10, -24, 4$ ; 418 voxels,  $T = -6.52$ ). There were no brain areas that showed significantly increased connectivity post-EFT treatment.

## 4. Discussion

The present study supports previous findings that EFT may have the ability to significantly reduce pain symptomology and associated



**Fig. 2.** Results for the seed-to-voxel-voxel functional connectivity analysis. Sagittal brain image depicting the seed region in the medial frontal cortex (MedFC) and the brain regions exhibiting statistically significantly decreased patterns of interregional connectivity (i.e. the thalamus and posterior cingulate cortex). A two-sided  $t$ -test was used at a voxel threshold of  $p < 0.01$  and a cluster-defining threshold  $p < 0.05$  (FWE corrected for multiple comparisons).

psychological indicators. The neuroimaging results add to this literature suggesting EFT also potentially affects connectivity between the medial prefrontal cortex, bilateral grey matter areas in the posterior cingulate cortex and thalamus in CP sufferers. The prefrontal cortex is recognized as one of the main regions modulating pain [44]; the changes that occur during acute and chronic pain are altered by neurotransmitters, gene expression, glial cells, and neuroinflammation. The medial frontal cortex connectivity to the thalamus is also related to relay and modulation of pain, and the thalamus is indicated to be part of a network affecting spinal cord activity and modulating nociceptive information [45]. Finally, the posterior cingulate cortex is implicated as a key centre for catastrophizing pain [46].

Generally, it has been shown psychotherapeutic interventions can result in structural brain changes, and this ranges from cognitive approaches to behaviour activation, virtual reality as exposure and psychodynamic therapies [47–49]. Indeed, there is strong evidence that therapy targeting changes in thought patterns, beliefs, feelings, and behaviors can lead to a normalization of functional brain activity at a global level [48,49]. Specific to pain, psychological interventions such as CBT have demonstrated reduced resting state connectivity between the primary somatosensory cortex and anterior/medial insula after 4-weeks of intervention for Fibromyalgia, and these were associated with concurrent treatment-related reductions in catastrophizing [50]. Others have indicated abnormal intrinsic connectivity networks related

to the orbitofrontal cortex (OFC) and inferior parietal lobule within the dorsal attention network normalize after 12-weeks of CBT [51]. Functional changes have also been noted in the posterior cingulate cortex, cingulate gyrus, and paracingulate gyrus after CBT for migraine, experimental pain, and mixed pain [52]. In light of the current study and EFT intervention, this does appear to highlight the complexity of pain and nature of connectivity between brain regions. EFT affected somewhat different areas compared to CBT, although both show positive changes aligned with the psychological outcomes. Pain is considered a multidimensional sensory and emotional experience and this study offers an alternative body-centric intervention to achieve top-down pain control and altered perception of the pain signal.

While the present study has several strengths (comprehensive inclusion and exclusion criteria and moderate power), a number of limitations will need to be addressed in future studies. The sample was not large enough to determine the impact of adverse childhood experiences and their contribution to CP. Previous research (e.g. Ref. [42], has shown a relationship however the mean ACE score in this sample was low. We did not have a control group nor follow-up period, nor did we isolate certain pain conditions. Future research would benefit from analyzing separate specific types of pain through randomized controlled trials.

Despite this, collectively the results support the potential effectiveness of EFT in reducing catastrophizing and modulating in CP sufferers. This is the first EFT study to include objective measures such as fMRI, and the outcomes are consistent with previous studies that have only targeted subjective measures. The acupoint tapping technique may indeed generates activating and deactivating signals which impact brain areas implicated in chronic pain. This may be particularly important in supporting non-pharmacologic treatment protocols, and in stepped care models of pain. As an approach that is effective delivered both as a self-help modality and in the online space, it has the capacity to support self-management for chronic pain sufferers and as an adjunct to other interventions.

#### Author statement

Peta Stapleton: conceptualisation, methodology, investigation, supervision and original draft preparation and writing, reviewing, Oliver Baumann: conceptualisation, methodology, investigation, fMRI data analysis and writing, Tom O'Keefe: data analysis, writing and editing.

#### Funding

The research leading to these results received funding from the Bond University Infrastructure Grant.

#### Ethics approval

This study was performed in line with the principles of the Declaration of Helsinki. Approval was granted by the Ethics Committee of Bond University (Date 17/6/2020. No. PS00147).

#### Consent

Informed consent was obtained from all individual participants included in the study.

#### Data, materials and/or code availability

The datasets for this study can be found at this link <https://osf.io/>

#### Declaration of competing interest

Author A may receive speaking fees for the topic based on clinical expertise. The remaining authors have no relevant financial or non-

financial interests to disclose.

#### Acknowledgements

Gold Coast University Hospital Imaging Service; Michele Stewart and Michelle McCosker for facilitating the trial and the emotional assistants who supported the participants.

#### References

- [1] J. Katz, B.N. Rosenbloom, S. Fashler, Chronic pain, psychopathology, and DSM-5 somatic symptom disorder, *Canadian Journal of Psychiatry Revue canadienne de psychiatrie* 60 (2015) 160–167.
- [2] A. Fayaz, P. Croft, R.M. Langford, L.J. Donaldson, G.T. Jones, Prevalence of chronic pain in the UK: a systematic review and meta-analysis of population studies, *BMJ Open* 6 (2016), e010364, <https://doi.org/10.1136/bmjopen-2015-010364>.
- [3] M.E. Lynch, What is the latest in pain mechanisms and management? *Canadian Journal of Psychiatry Revue canadienne de psychiatrie* 60 (2015) 157–159.
- [4] J. Sheng, S. Liu, Y. Wang, R. Cui, X. Zhang, The link between depression and chronic pain: neural mechanisms in the brain, 2017, *Neural Plasticity in Mood Disorders* (2017), 9724371, <https://doi.org/10.1155/2017/9724371>.
- [5] C. Abdel Shaheed, C.G. Maher, K.A. Williams, R. Day, A.J. McLachlan, Efficacy, tolerability, and dose-dependent effects of opioid analgesics for low back pain: a systematic review and meta-analysis, *JAMA Intern. Med.* 176 (2016) 958–968, <https://doi.org/10.1001/jamainternmed.2016.1251>.
- [6] K. Kenan, K. Mack, L. Paulozzi, Trends in prescriptions for oxycodone and other commonly used opioids in the United States, 2000–2010, *Open Med.* 6 (2012) e41–e47.
- [7] M. van Middelkoop, S.M. Rubinstein, T. Kuijpers, A.P. Verhagen, R. Ostelo, B. W. Koes, M.W. van Tulder, A systematic review on the effectiveness of physical and rehabilitation interventions for chronic non-specific low back pain, *Eur. Spine J.: Official Publication of the European Spine Society, the European Spinal Deformity Society, and the European Section of the Cervical Spine Research Society* 20 (1) (2011) 19–39, <https://doi.org/10.1007/s00586-010-1518-3>.
- [8] A. Hajihasani, M. Rouhani, M. Salavati, R. Hedayati, A.H. Kahlaee, The influence of Cognitive Behavioral Therapy on pain, quality of life, and depression in patients receiving physical therapy for chronic low back pain: a systematic review, *J. Injury Func. Rehabil.* 11 (2019) 167–176.
- [9] Feinstein, D. (in press). Integrating the manual stimulation of acupuncture points into psychotherapy: a systematic review with clinical recommendations. *J. Psychother. Integrat.*
- [10] B. Sebastian, J. Nelms, The effectiveness of Emotional Freedom Techniques in the treatment of posttraumatic stress disorder: a meta-analysis, *Explore* 13 (2017) 16–25.
- [11] D. Church, C. Hawk, A. Brooks, O. Toukolehto, M. Wren, I. Dinter, P. Stein, Psychological trauma symptom improvement in veterans using emotional freedom techniques: a randomized controlled trial, *J. Nerv. Ment. Dis.* 201 (2) (2013) 153–160, <https://doi.org/10.1097/NMD.0b013e31827f6351>.
- [12] A.M. Bougea, N. Spandideas, E.C. Alexopoulos, T. Thomaidis, G.P. Chrousos, C. Darviri, Effect of the emotional freedom technique on perceived stress, quality of life, and cortisol salivary levels in tension-type headache sufferers: a randomized controlled trial, *Explore J. Sci. Heal.* 9 (2) (2013) 91–99, <https://doi.org/10.1016/j.explore.2012.12.005>.
- [13] B.S. Baker, C.J. Hoffman, Emotional Freedom Techniques (EFT) to reduce the side effects associated with tamoxifen and aromatase inhibitor use in women with breast cancer: a service evaluation, *Eur. J. Integra. Med.* 7 (2) (2014) 136–142.
- [14] P. Stapleton, M. Stewart, Comparison of the effectiveness of two modalities of group delivery of emotional freedom technique (EFT) intervention for food cravings: online versus in-person, *Open J. Soc. Sci.* 8 (2) (2020) 158–181.
- [15] G. Brattberg, Self-administered EFT (Emotional Freedom Techniques) in individuals with fibromyalgia: a randomized trial, *Integr. Med.: A Clinician's Journal* 7 (2008) 30–35.
- [16] D. Church, A.J. Brooks, The effect of a brief EFT (emotional freedom techniques) self-intervention on anxiety, depression, pain and cravings in healthcare workers, *Integr. Med.: A Clinician's Journal* 9 (2010) 40–44.
- [17] D. Church, J. Nelms, Pain, range of motion, and psychological symptoms in a population with frozen shoulder: a randomized controlled dismantling study of clinical EFT (emotional freedom techniques), *Arch. Sci. Psychol.* 4 (1) (2016) 38–48, <https://doi.org/10.1037/arc0000028>.
- [18] P. Hodge, Psychological and physiological symptoms of psoriasis after group EFT (emotional freedom techniques) treatment: a pilot study, *Energy Psychol. J.* 3 (2) (2011), <https://doi.org/10.9769/EPJ.2011.3.2.PH>.
- [19] P. Swingle, EFT in the neurotherapeutic treatment of seizure disorders, *Energy Psychol.: Theory Res. Treat.* 2 (2010) 27–38.
- [20] D. Church, A.J. Brooks, CAM and energy psychology techniques remediate PTSD symptoms in veterans and spouses, *Explore J. Sci. Heal.* 10 (1) (2014) 24–33, <https://doi.org/10.1016/j.explore.2013.10.006>.
- [21] D. Church, G. Yount, K. Rachlin, L. Fox, J. Nelms, Epigenetic effects of PTSD remediation in veterans using clinical emotional freedom techniques: a randomized controlled pilot study, *Am. J. Health Promot.* 32 (1) (2018) 112–122.
- [22] D. Church, M. Clond, Is online treatment as effective as in person treatment? Psychological change in two relationship skills groups, *J. Nerv. Ment. Dis.* 207 (5) (2019) 315–319.

- [23] P. Stapleton, C. Buchan, I. Mitchell, Y. McGrath, P. Gorton, B. Carter, An initial investigation of neural changes in overweight adults with food cravings after Emotional Freedom Techniques, *OBM Integrat. Complement. Med.* 4 (1) (2019) 14, <https://doi.org/10.21926/obm.icm.1901010>.
- [24] P. Stapleton, T. Roos, G. Mackintosh, E. Sparenburg, D. Sabot, B. Carter, Online delivery of Emotional Freedom Techniques in the treatment of food cravings and weight management: a randomized controlled trial, *OBM Integrat. Complement. Med.* 4 (4) (2019).
- [25] D. Church, P. Stapleton, D. Sabot, App-based delivery of clinical EFT: cross-sectional study of app user self-ratings, *JMIR mHealth and uHealth* 8 (10) (2020), e18545.
- [26] D. Church, Clinical EFT as an evidence-based practice for the treatment of psychological and physiological conditions, *Psychology* 4 (8) (2013) 645–654.
- [27] D. Church, G. Yount, A. Brooks, The effect of emotional freedom techniques on stress biochemistry: a randomized controlled trial, *J. Nerv. Ment. Dis.* 200 (10) (2012) 891–896.
- [28] M.E. Maharaj, Differential gene expression after Emotional Freedom Techniques (EFT) treatment: a novel pilot protocol for salivary mRNA assessment, *Energy Psychol.: Theory Res. Treat.* 8 (1) (2016) 17–32, <https://doi.org/10.9769/EPJ.2016.8.1.MM>.
- [29] N. Ortner, J. Palmer-Hoffman, M.A. Clond, Effects of emotional freedom techniques (EFT) on the reduction of chronic pain in adults: a pilot study, *Energy Psychol.: Theory Res. Treat.* 6 (2014) 14–21.
- [30] P. Stapleton, H. Chatwin, L. Sheppard, J. McSwan, The lived experience of chronic pain and the impact of brief Emotional Freedom Techniques (EFT) group therapy on coping, *Energy Psychol.* 8 (2016) 1–11.
- [31] L. Sastra, G. Sari, The influence of Emotional Freedom Technique (EFT) on the decrease of dismenorrhea pain in adolescents, *Res. Appl. Sci. Educ.* 8 (1) (2016) 34–39, <https://doi.org/10.22216/jit.2014.v8i1.451>.
- [32] L. Latifah, D. Ramawati, Emotional intervention of Emotional Freedom Technique to reduce post operation pain of Caesarian section, *Ind. Nur. J. Edu. Clinic* 1 (1) (2014), <https://doi.org/10.24990/injec.v1i1.52>.
- [33] J. Fang, J. Zhen, Y. Wang, K. Li, J. Kong, E.E. Nixon, Y. Zeng, Y. Ren, H. Tong, Y. Wang, P. Wang, K.K.-S. Hui, The salient characteristics of the central effects of acupuncture needling: limbic-paralimbic-neocortical network modulation, *Hum. Brain Mapp.* 30 (2009) 1196–1206, <https://doi.org/10.1002/hbm.20583>.
- [34] S.N. Bagriantsev, E.O. Gracheva, P.G. Gallagher, Piezo proteins: regulators of mechanosensation and other cellular processes, *J. Biol. Chem.* 289 (46) (2014) 31673–31681, <https://doi.org/10.1074/jbc.R114.612697>.
- [35] H.M. Langevin, J.A. Yandow, Relationship of acupuncture points and meridians to connective tissue planes, *Anat. Rec.* 269 (6) (2002) 257–265, <https://doi.org/10.1002/ar.10185>.
- [36] T. Li, B.Q. Tang, W. Zhang, M. Zhao, Q. Hu, A. Ahn, Vivo Visualization of the Pericardium Meridian with Fluorescent Dyes, *Evid. base Compl. Alternative Med.* (2021), 5581227, <https://doi.org/10.1155/2021/5581227>, 2021.
- [37] E. Diener, R.A. Emmons, R.J. Larsen, S. Griffin, The satisfaction with life scale, *J. Pers. Assess.* 49 (1985) 71–75.
- [38] P. Cowan, N. Kelly, Quality of Life Scale. The American Chronic Pain Association, 2003. [https://www.theacpa.org/wp-content/uploads/2017/08/Life\\_Scale\\_3.pdf](https://www.theacpa.org/wp-content/uploads/2017/08/Life_Scale_3.pdf).
- [39] K. Kroenke, R.L. Spitzer, J.B.W. Williams, B. Löwe, The patient health questionnaire somatic, anxiety, and depressive symptom scales: a systematic review, *Gen. Hosp. Psychiatr.* 32 (4) (2010) 345–359, <https://doi.org/10.1016/j.genhosppsych.2010.03.006>.
- [40] A. Abdel-Khalek, Measuring happiness with a single-item scale, *SBP (Soc. Behav. Pers.): Int. J.* 34 (2006) 139–150, <https://doi.org/10.2224/sbp.2006.34.2.139>.
- [41] V.J. Felitti, R.F. Anda, D. Nordenberg, D.F. Williamson, A.M. Spitz, V. Edwards, J. S. Marks, Relationship of childhood abuse and household dysfunction to many of the leading causes of death in adults: the Adverse Childhood Experiences (ACE) Study, *Am. J. Prev. Med.* 14 (4) (1998) 245–258, [https://doi.org/10.1016/S0749-3797\(98\)00017-8](https://doi.org/10.1016/S0749-3797(98)00017-8).
- [42] J. McBeth, S. Morris, S. Benjamin, A.J. Silman, G.J. Macfarlane, Associations between adverse events in childhood and chronic widespread pain in adulthood: are they explained by differential recall? *J. Rheumatol.* 28 (10) (2001) 2305–2309.
- [43] Y. Behzadi, K. Restom, J. Liu, T.T. Liu, A component based noise correction method (CompCor) for BOLD and perfusion based fMRI, *Neuroimage* 37 (1) (2007) 90–101, <https://doi.org/10.1016/j.neuroimage.2007.04.042>.
- [44] W.Y. Ong, C.S. Stohler, D.R. Herr, Role of the prefrontal cortex in pain processing, *Mol. Neurobiol.* 56 (2) (2019) 1137–1166, <https://doi.org/10.1007/s12035-018-1130-9>.
- [45] C.B. Ab Aziz, A.H. Ahmad, The role of the thalamus in modulating pain, *Malays. J. Med. Sci.* 13 (2) (2006) 11–18.
- [46] J. Lee, E. Protsenko, A. Lazaridou, O. Franceschelli, D.M. Ellingsen, I. Mawla, K. Isenburg, M.P. Berry, L. Galenkamp, M.L. Loggia, A.D. Wasan, R.R. Edwards, V. Napadow, Encoding of self-referential pain catastrophizing in the posterior cingulate cortex in fibromyalgia, *Arthritis Rheumatol.* 70 (8) (2018) 1308–1318, <https://doi.org/10.1002/art.40507>.
- [47] Y. Álvarez-Pérez, F. Rivero, M. Herrero, C. Viña, A. Fumero, M. Betancort, W. Peñate, Changes in brain activation through Cognitive-Behavioral Therapy with exposure to virtual reality: a neuroimaging study of specific phobia, *J. Clin. Med.* 10 (16) (2021) 3505, <https://doi.org/10.3390/jcm10163505>.
- [48] M. Beauregard, Functional neuroimaging studies of the effects of psychotherapy, *Dialogues Clin. Neurosci.* 16 (1) (2014) 75–81, <https://doi.org/10.31887/DCNS.2014.16.1/mbeauregard>.
- [49] A. Manthey, A. Sierk, E.L. Brakemeier, H. Walter, J.K. Daniels, Does trauma-focused psychotherapy change the brain? A systematic review of neural correlates of therapeutic gains in PTSD, *Eur. J. Psychotraumatol.* 12 (1) (2021), 1929025, <https://doi.org/10.1080/20008198.2021.1929025>.
- [50] A. Lazaridou, J. Kim, C.M. Cahalan, M.L. Loggia, O. Franceschelli, C. Berna, P. Schur, V. Napadow, R.R. Edwards, Effects of Cognitive-Behavioral Therapy (CBT) on brain connectivity supporting catastrophizing in fibromyalgia, *Clin. J. Pain* 33 (3) (2017) 215–221, <https://doi.org/10.1097/AJP.0000000000000422>.
- [51] A. Yoshino, Y. Okamoto, G. Okada, M. Takamura, N. Ichikawa, C. Shibasaki, S. Yokoyama, M. Doi, R. Jinnin, H. Yamashita, M. Horikoshi, S. Yamawaki, Changes in resting-state brain networks after cognitive-behavioral therapy for chronic pain, *Psychol. Med.* 48 (7) (2018) 1148–1156, <https://doi.org/10.1017/S0033291717002598>.
- [52] S. Bao, M. Qiao, Y. Lu, Y. Jiang, Neuroimaging mechanism of cognitive behavioral therapy in pain management, *Pain Res. Manag.* (2022), 6266619, <https://doi.org/10.1155/2022/6266619>.